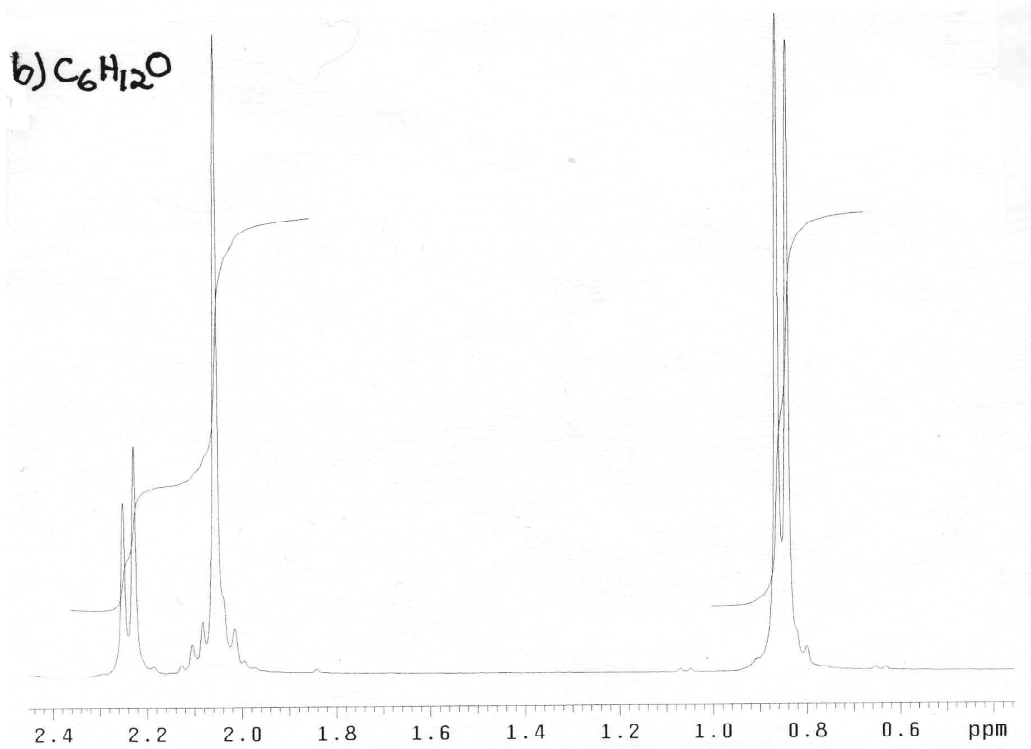
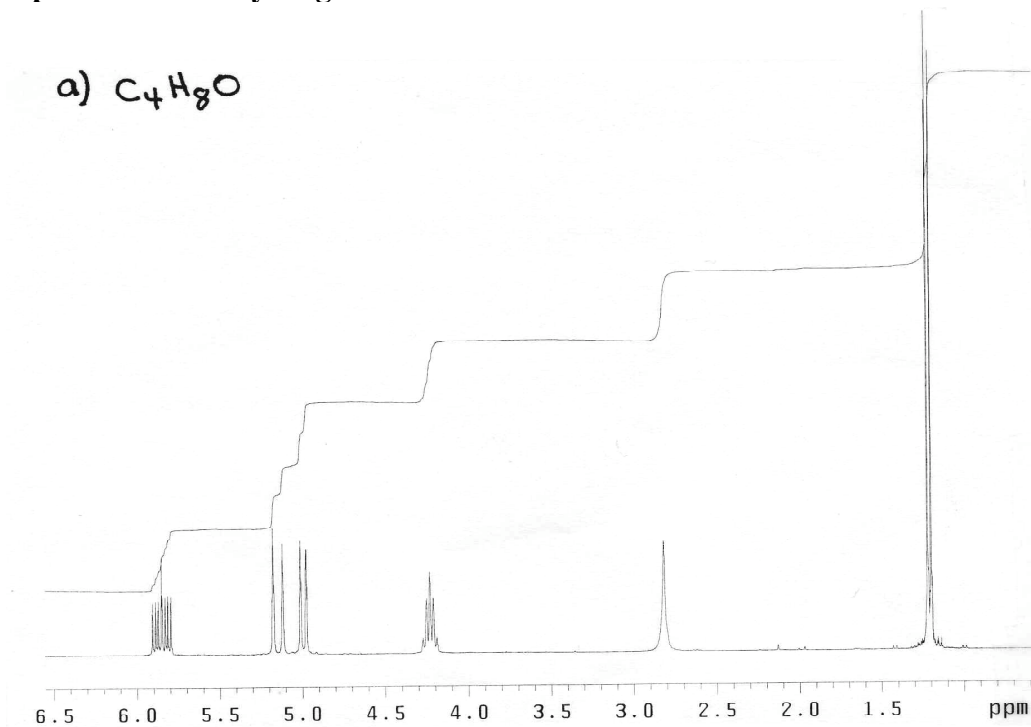


Name: \_\_\_\_\_

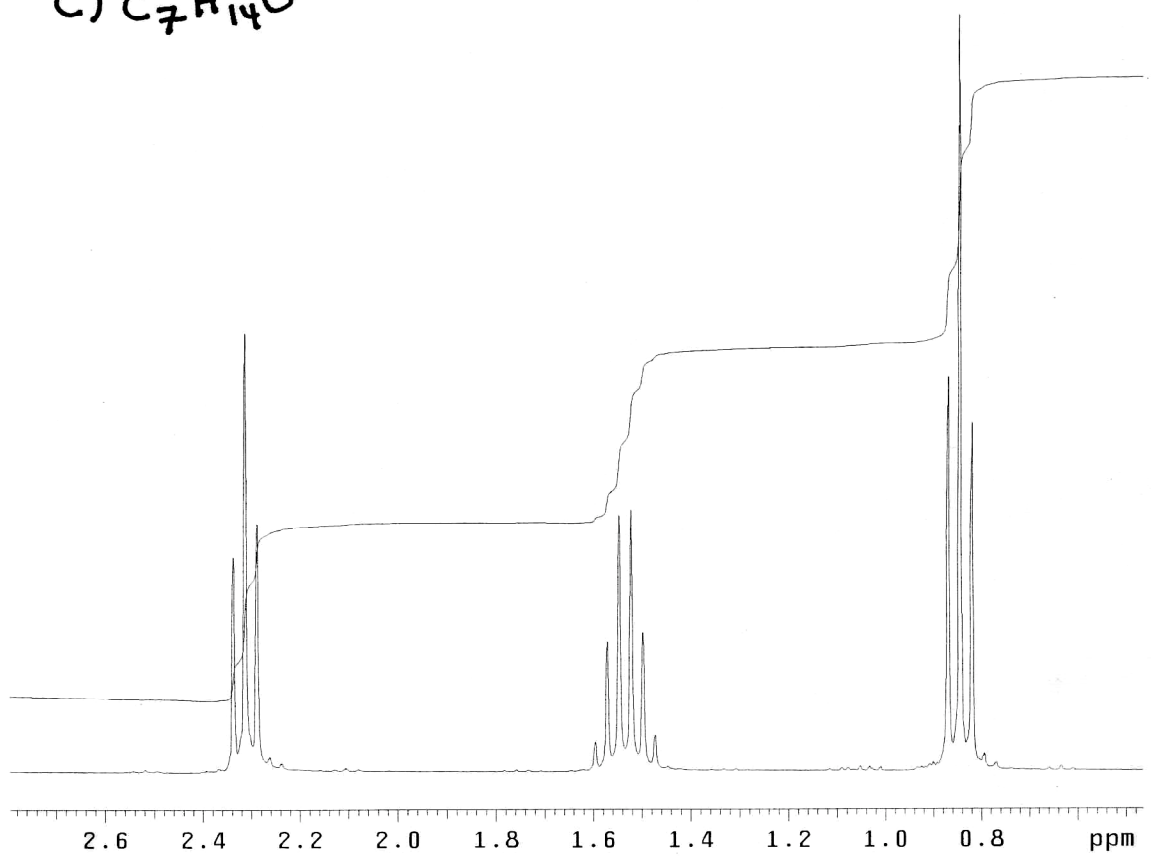
**Chemistry 250A -- November 24, 2009 -- HW/Quiz #10**

(This homework assignment is due Tuesday, Dec. 1)

(10 pts) The H-NMR spectra for a variety of molecules are shown below (and on the back). The molecular formula for each compound is indicated on the spectrum. Draw the structure for each of these compounds **and indicate which peaks in the spectrum correspond to which hydrogens in the structure.**



c)  $C_7H_{14}O$



d)  $C_7H_7OCl$

